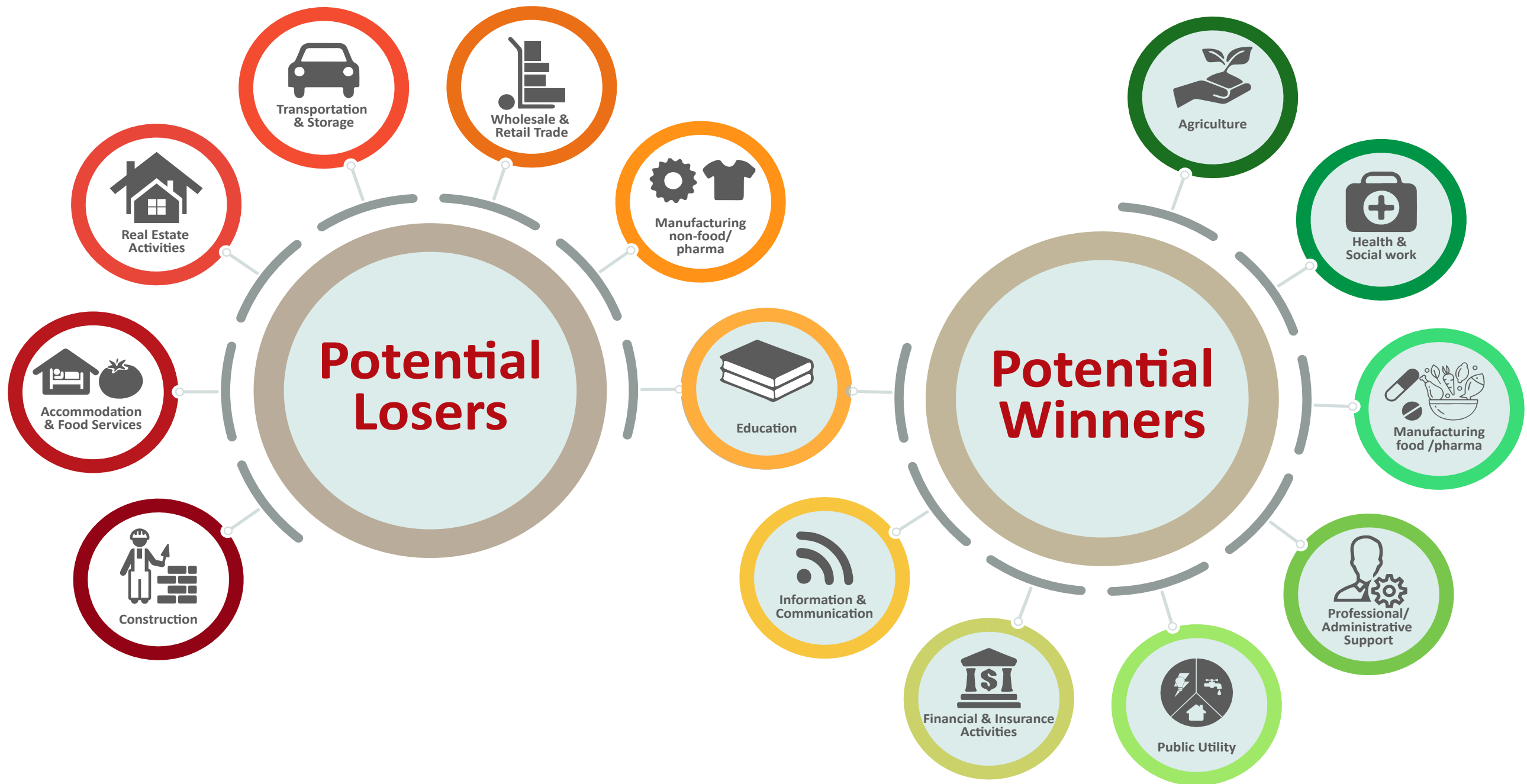
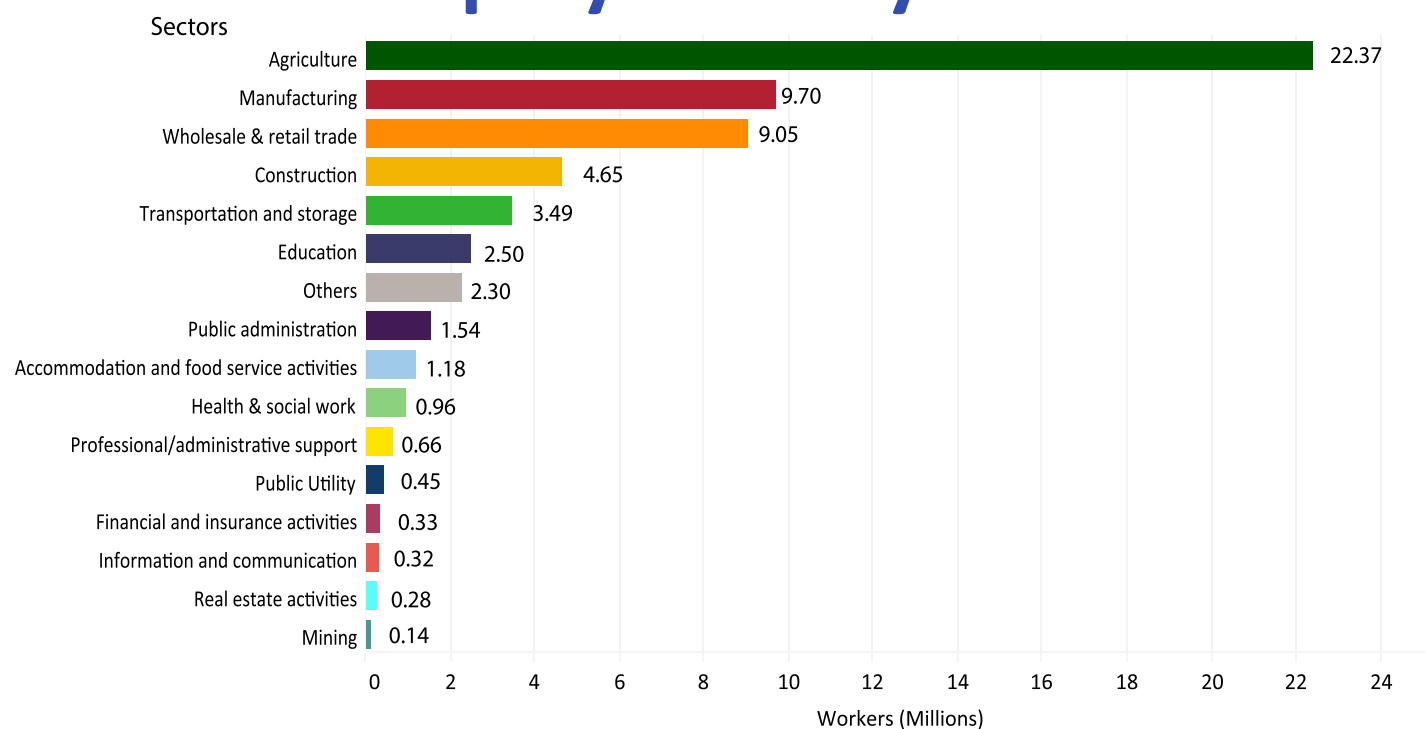


Sectoral Analysis of COVID-19 and Labour Market in Pakistan



Employment by Sector



* Labour Force Survey 2018, Pakistan Bureau of Statistics

Sectoral Analysis

The services sector is the worst hit due to the COVID induced lockdowns in the country. All sub-sectors, be it food and accommodation services (tourism and hospitality industry), education, retail, and the transportation sector, has been the worst hit.

The construction sector has come to a grinding halt owing to the lockdown and recommended social distancing. Most workers engaged in the construction sector are daily wage workers or are employed on a piece-rate basis. The manufacturing sector is impacted by the lockdown and cancellation/postponement of export orders.

Agriculture, to this moment, remains largely unaffected due to the government's policy of allowing movement of goods across the country, including agricultural produce. Similarly, the government has allowed food and beverage manufacturing units as well as pharmaceutical and seeds & pesticides units to continue working even during the lockdown.